

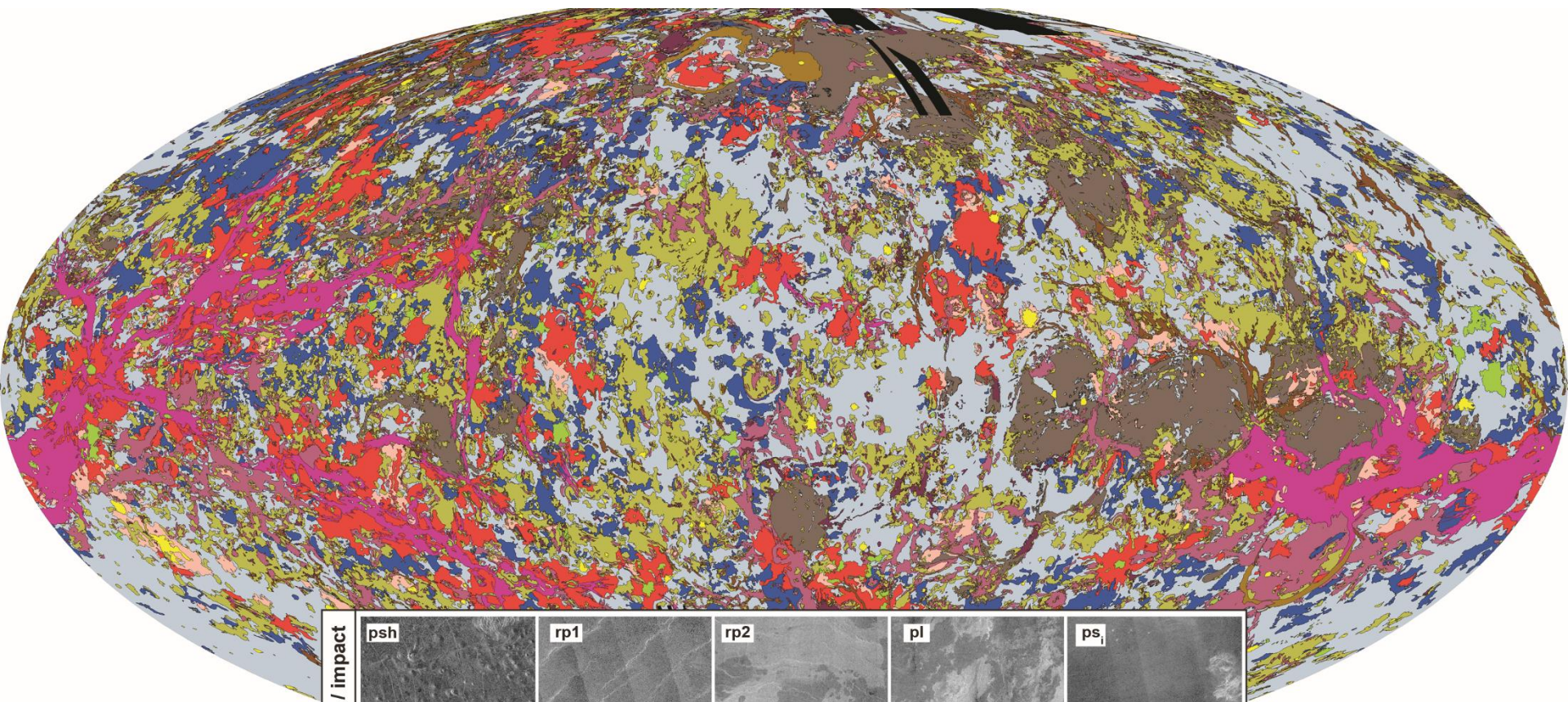
# **Preliminary selection of appropriate Venera-D landing sites**

**M.A. Ivanov, Vernadsky Institute, RAS**

# **Safety first**

**No safe landing: one-leg mission**

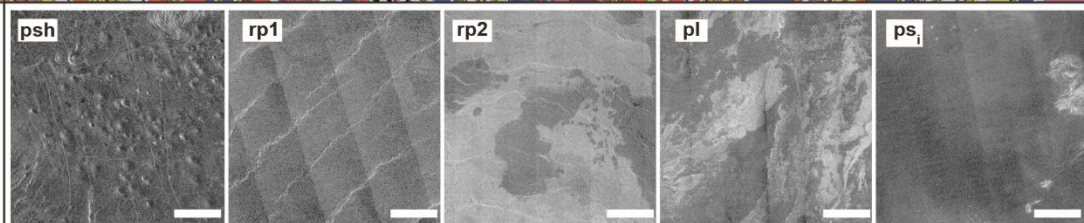
# Lander safety: Variety of units



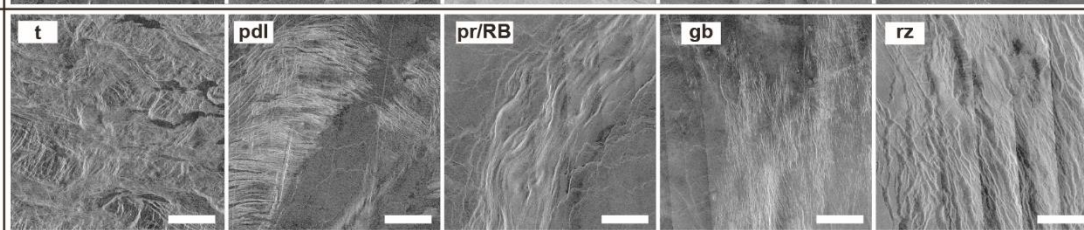
## Volcanic units

psh	Shield plains
rp1	Regional plains, lower unit
rp2	Regional plains, upper unit
ps	Smooth plains
pl	Lobate plains

Volcanic / impact



Tectonic units

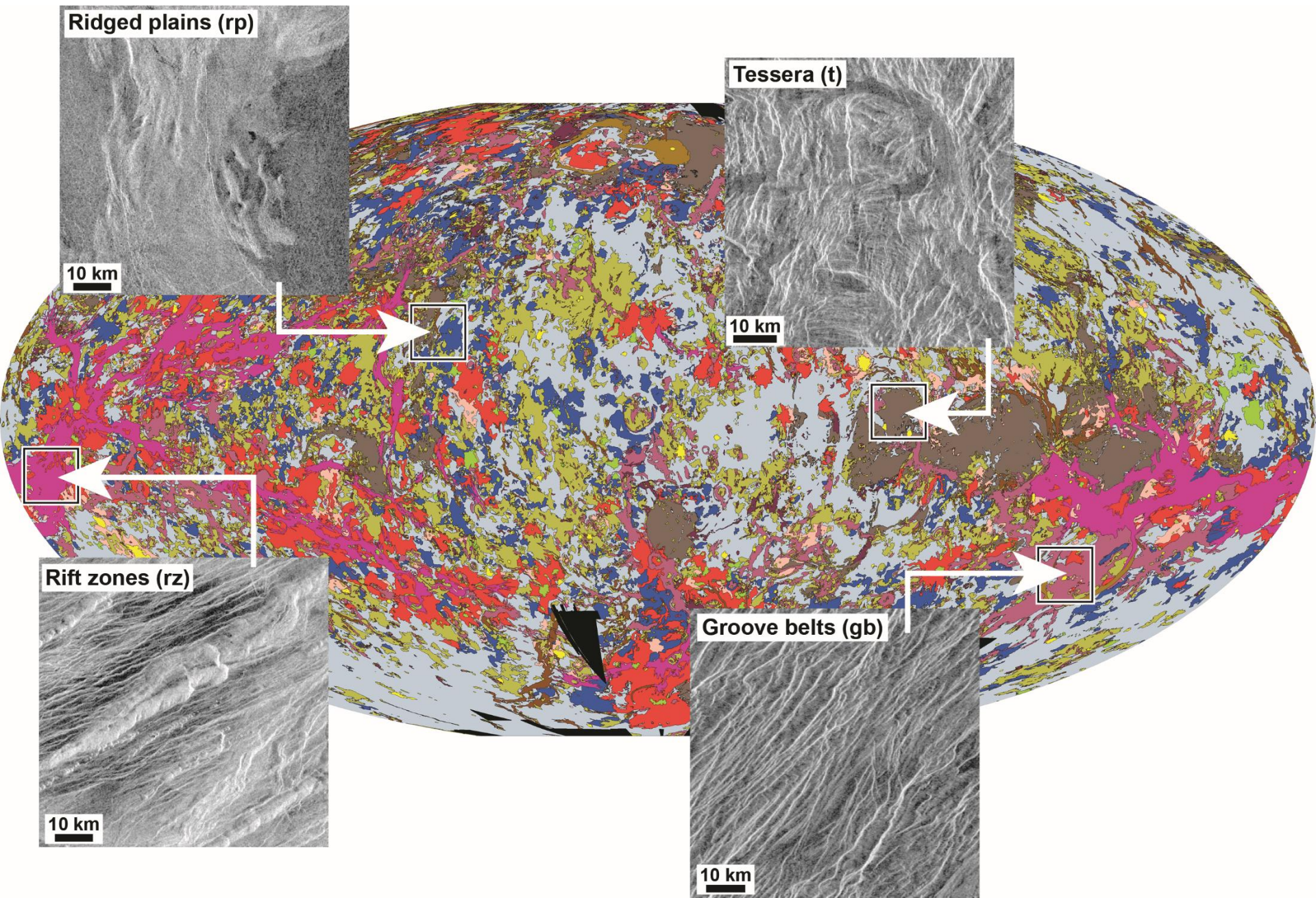


## Tectonic units

t	Tessera
pdl	Densely lineated plains
pr	Ridged plains
gb	Groove belts
rz	Rift zones



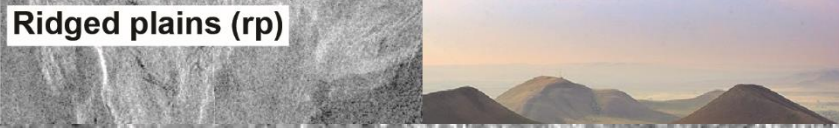
# Lander safety: Tectonic units





# Lander safety: Tectonic units

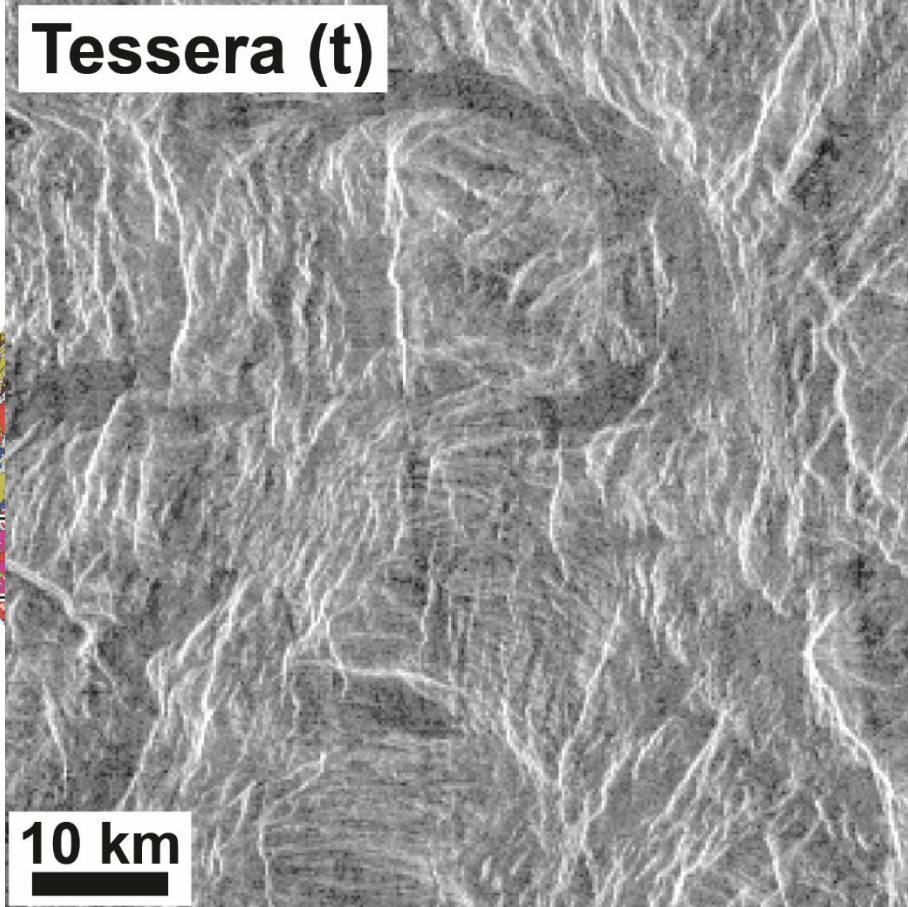
Ridged plains (rp)



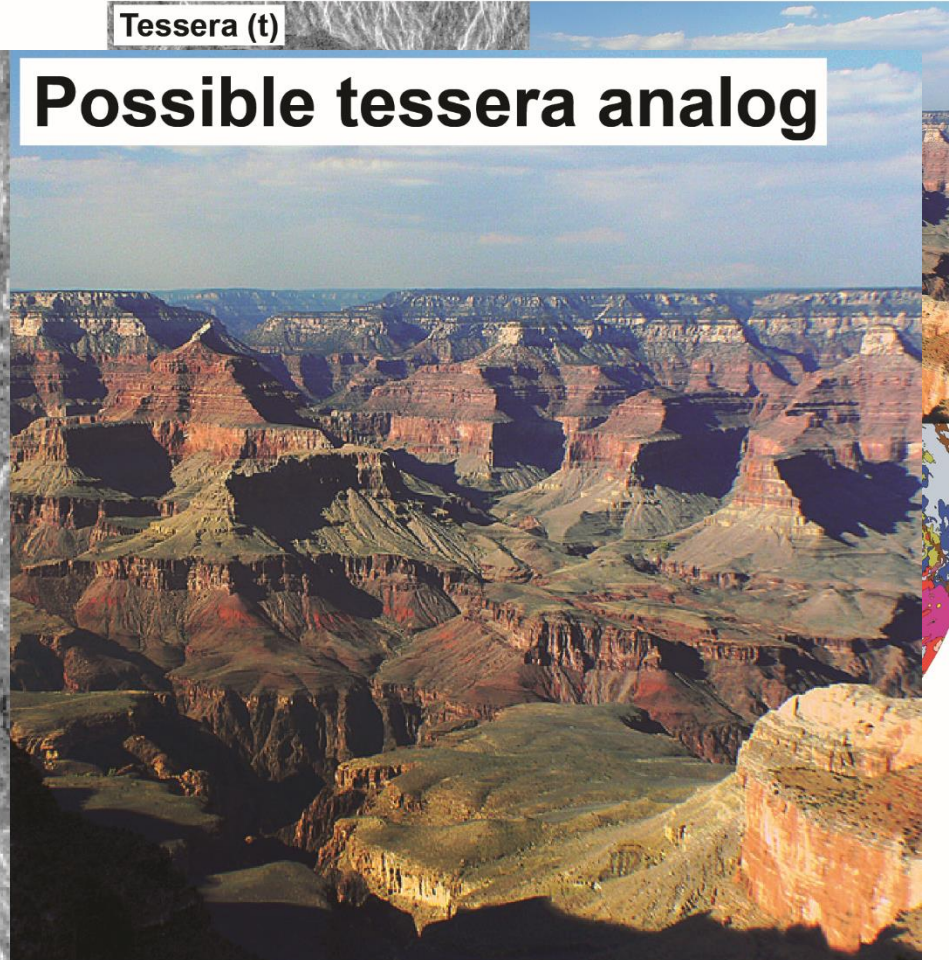
Tessera (t)



Tessera (t)



Possible tessera analog



10 km



10 km



10 km



# Lander safety: Tectonic units

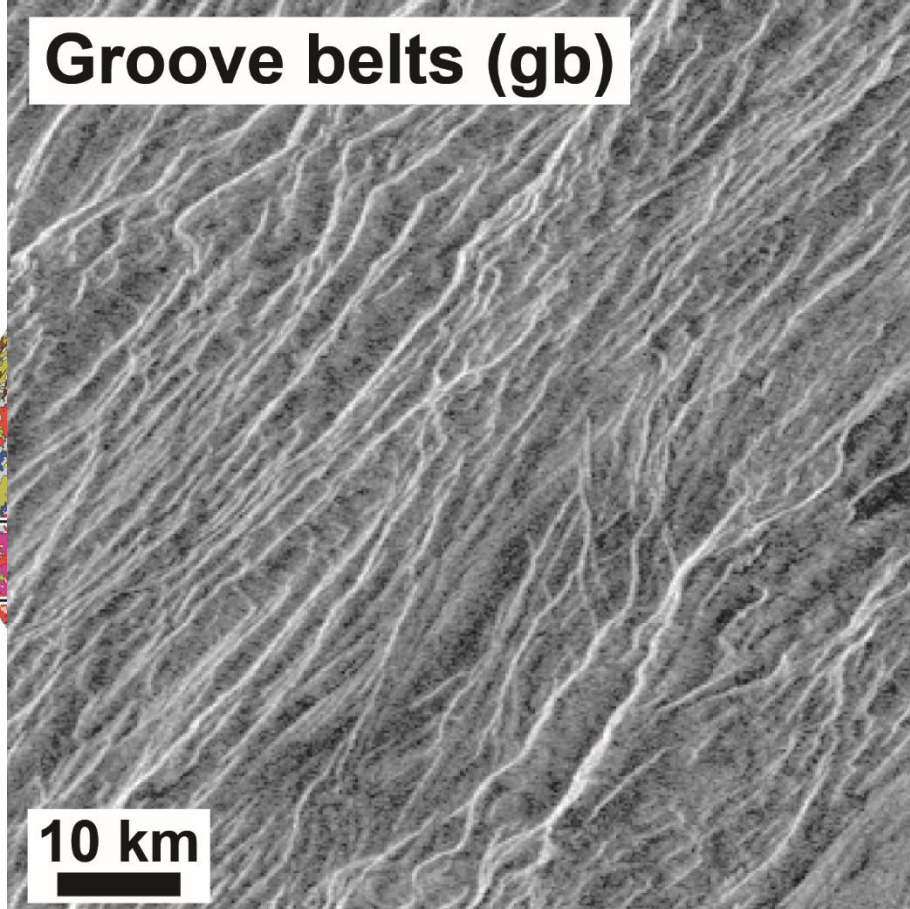
Ridged plains (rp)



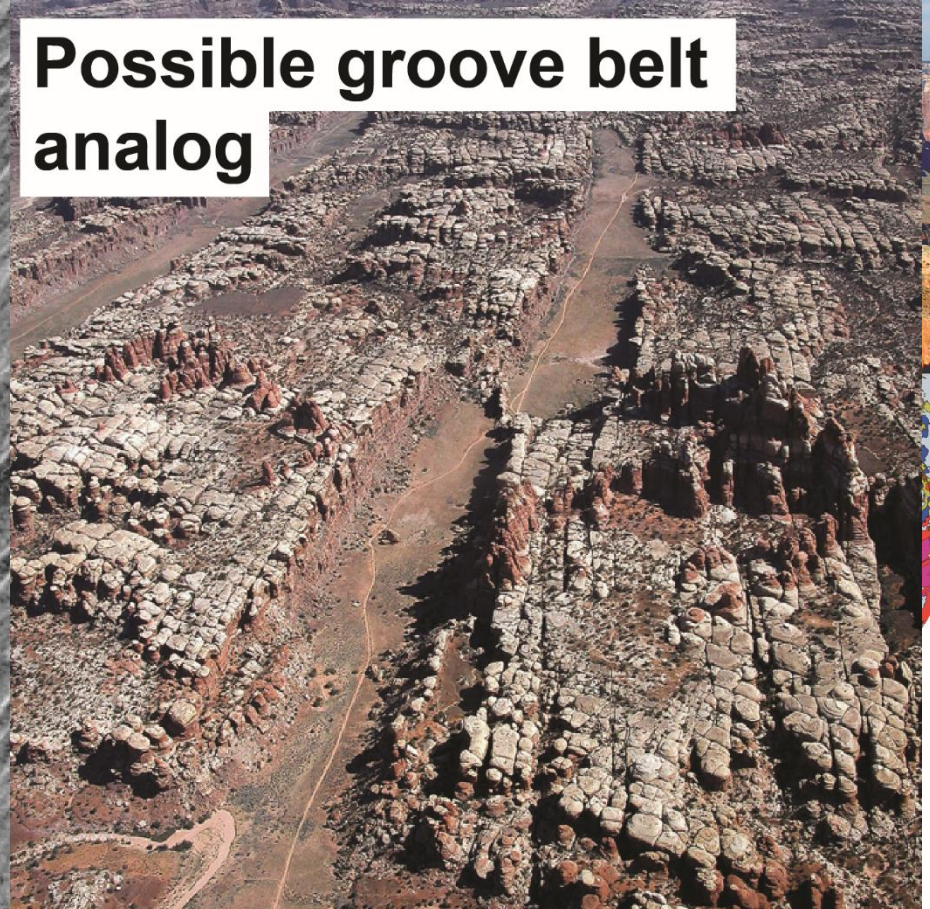
Tessera (t)



Groove belts (gb)



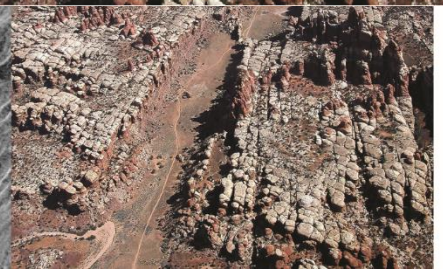
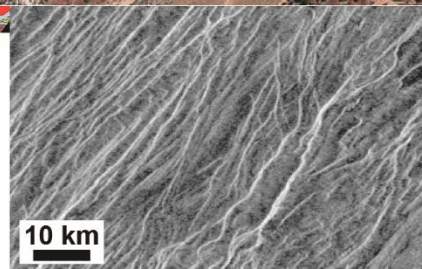
Possible groove belt analog



10 km



10 km





# Lander safety: Tectonic units

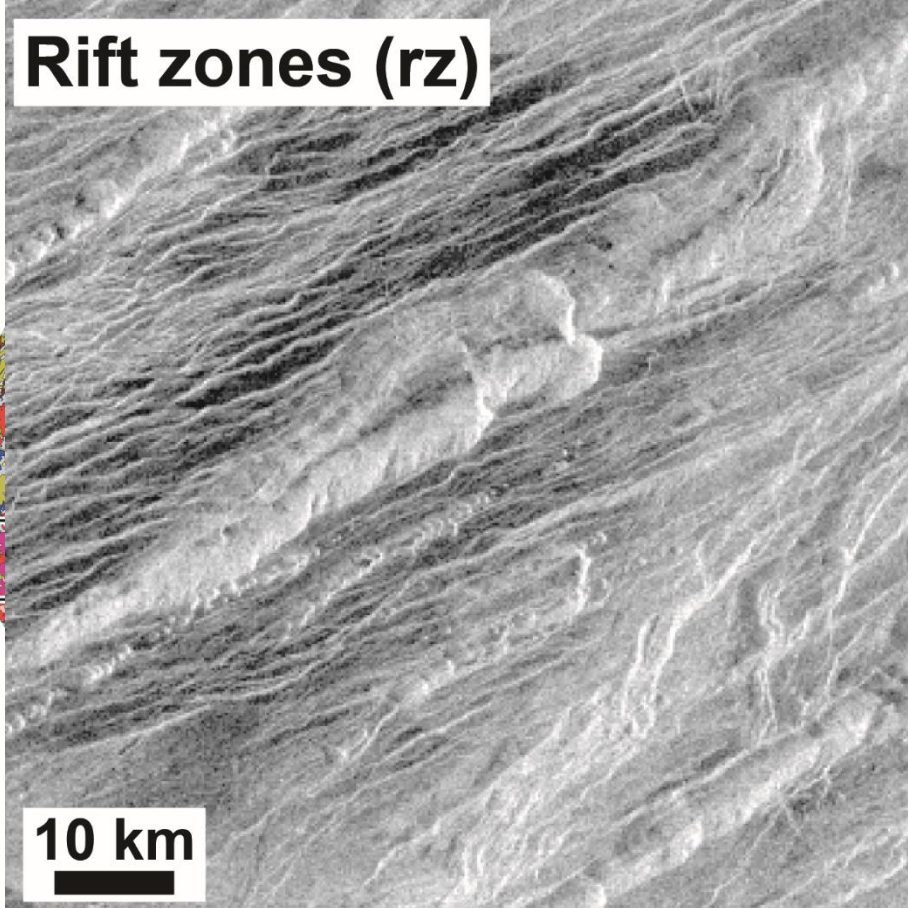
Ridged plains (rp)



Tessera (t)



Rift zones (rz)



Possible rift zone analog



10 km

10 km

10 km

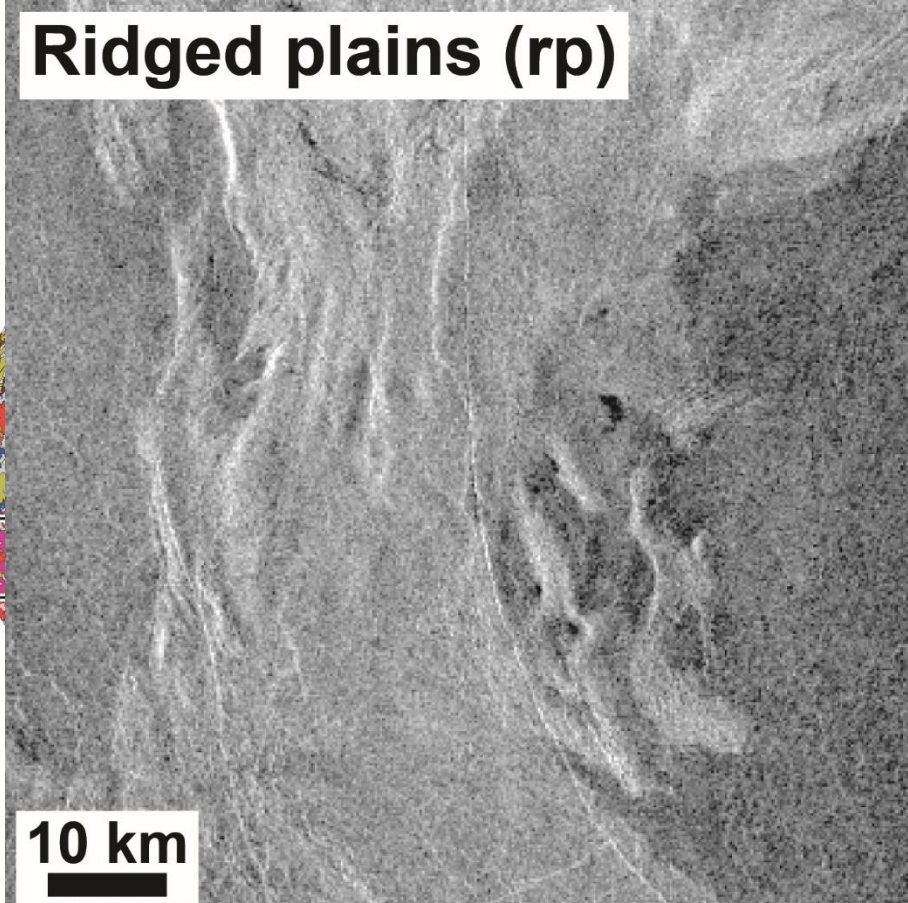


# Lander safety: Tectonic units

Ridged plains (rp)



Ridged plains (rp)



Tessera (t)



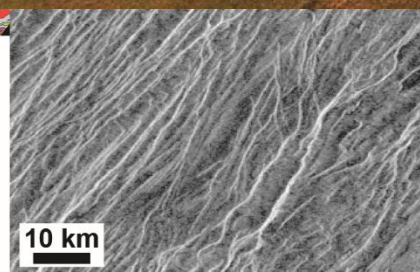
Possible ridged plains analog



10 km

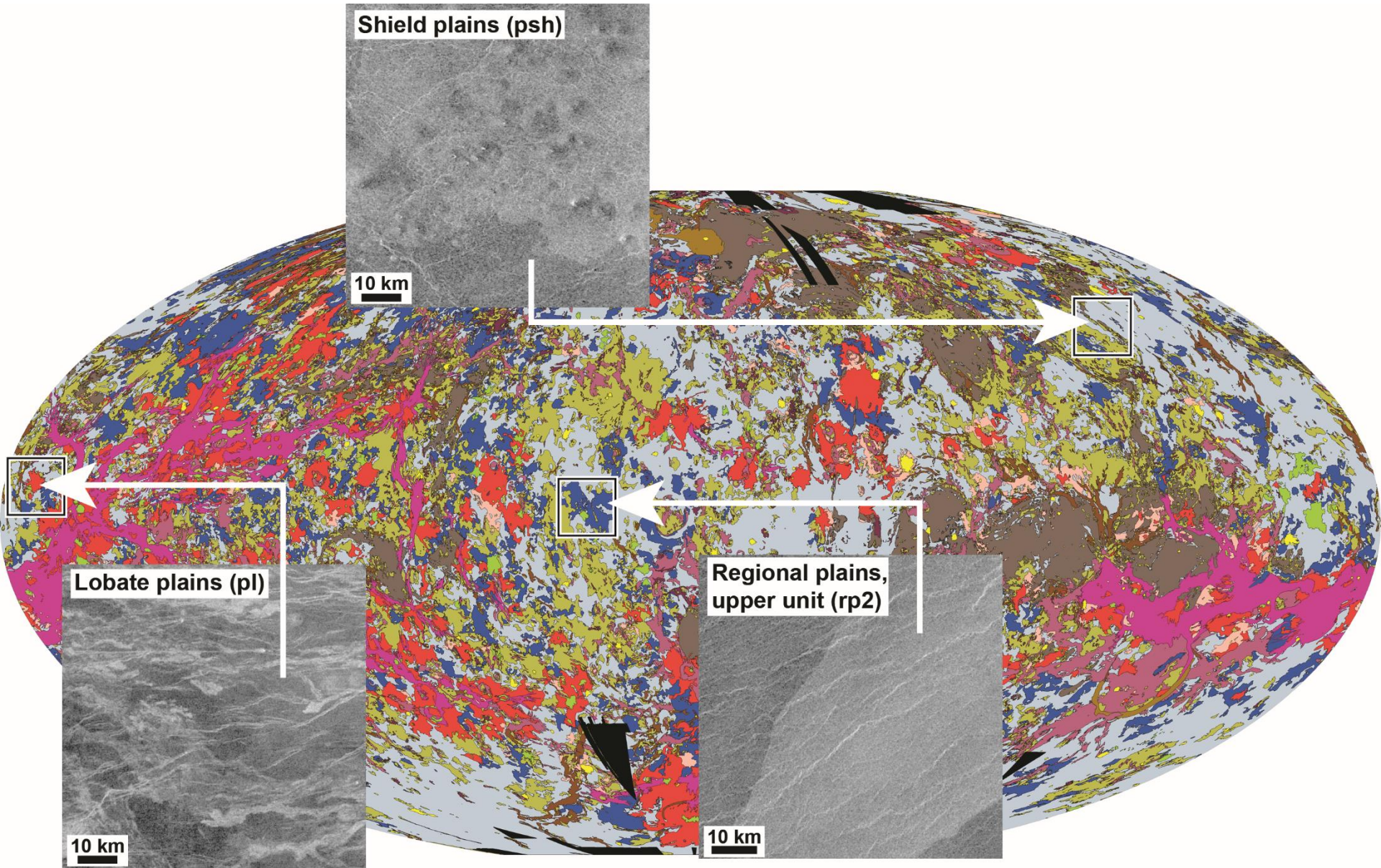


10 km





# Lander safety: Volcanic units, unsafe



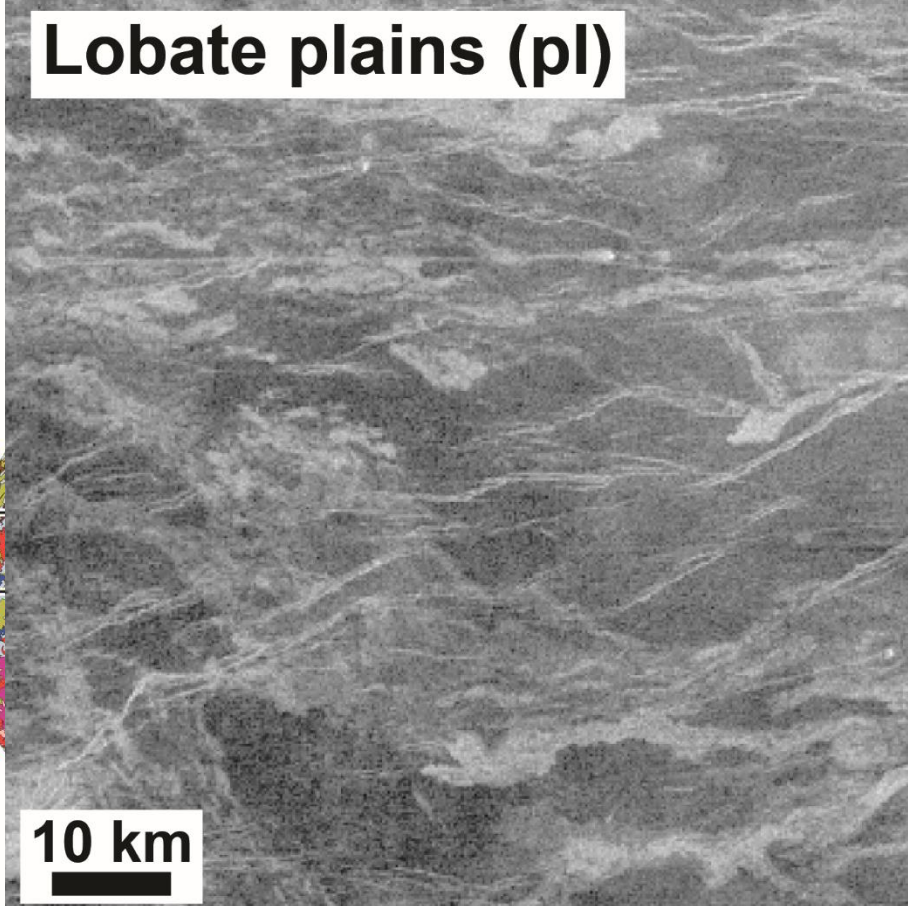


# Lander safety: Volcanic units, unsafe

Shield plains (psh)



Lobate plains (pl)



Possible lobate plains analog

10 km

10 km

10 km

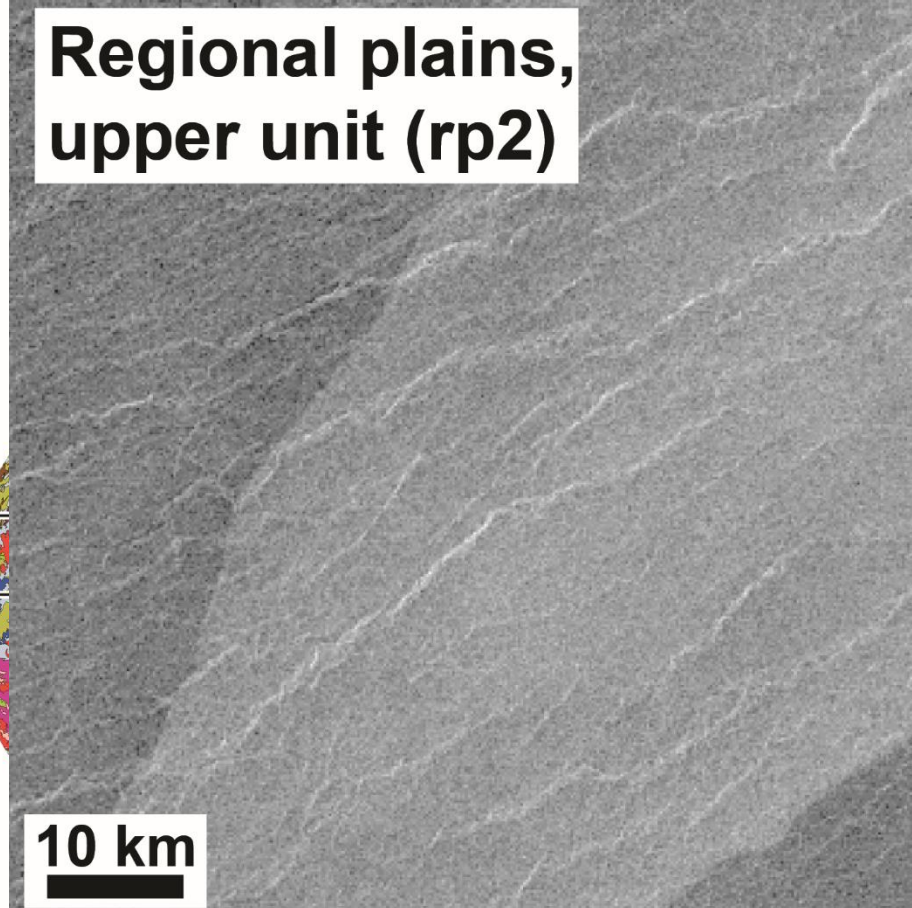


# Lander safety: Volcanic units, unsafe

Shield plains (psh)



Regional plains, upper unit (rp2)



Possible rp2 analog



10 km



10 km





# Lander safety: Volcanic units, unsafe

Shield plains (psh)

Shield plains (psh)

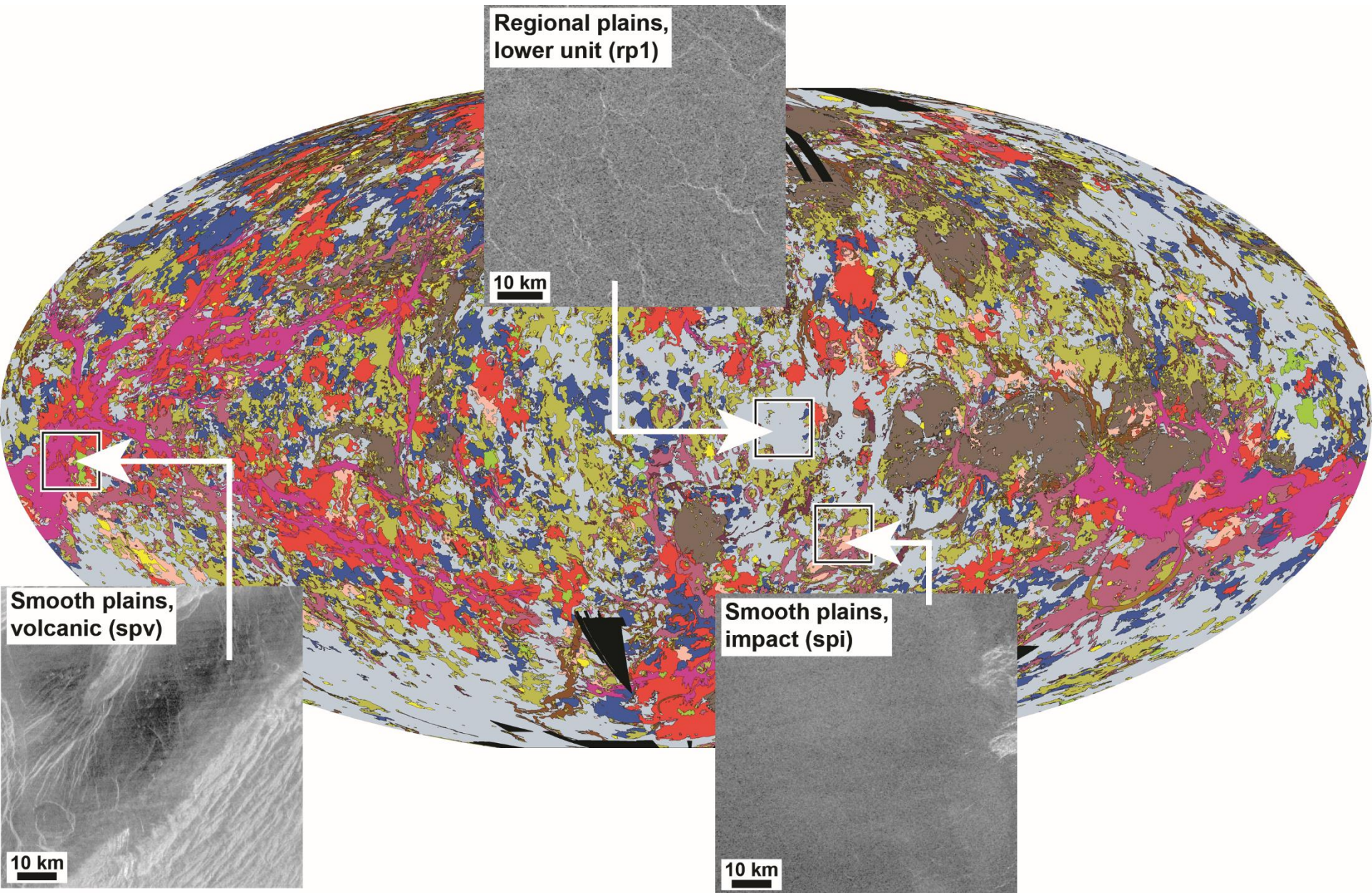
10 km

Possible psh analog

10 km



# Lander safety: Volcanic units, safe





# Lander safety: Volcanic units, safe

Regional plains,  
lower unit (rp1)

Regional plains,  
lower unit (rp1)

Possible rp1 analog

10 km

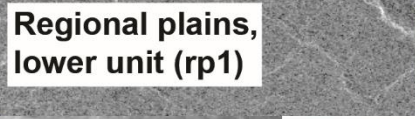
10 km

10 km

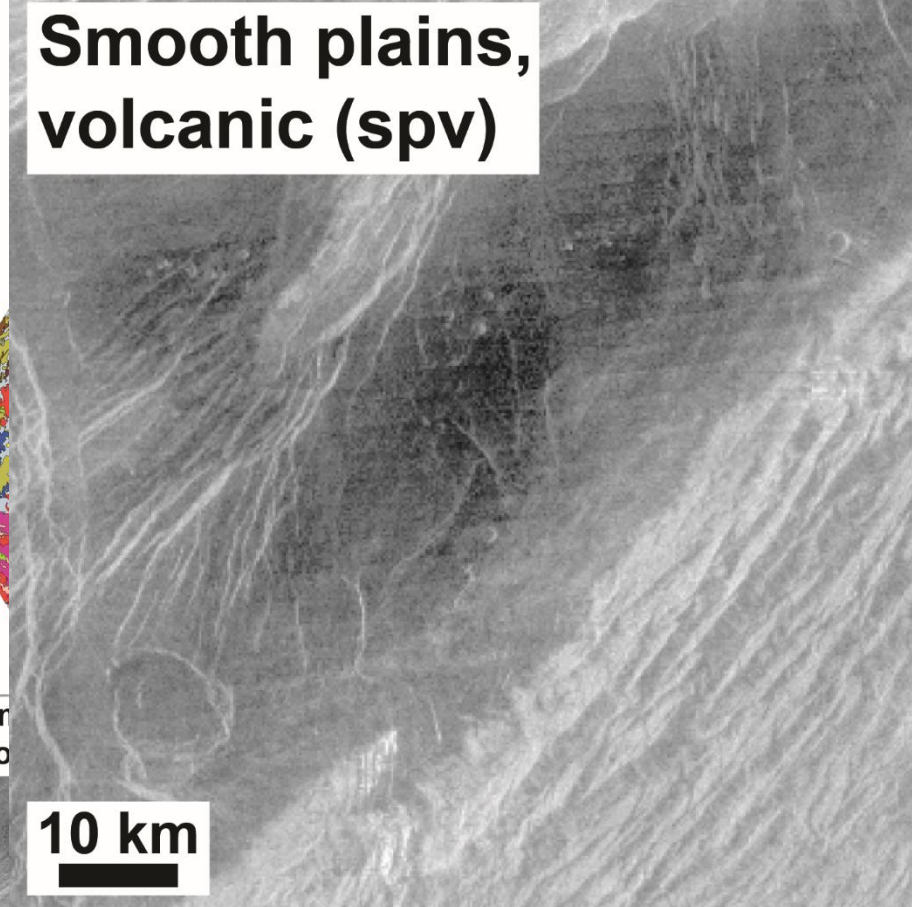


# Lander safety: Volcanic units, safe

Regional plains,  
lower unit (rp1)



Smooth plains,  
volcanic (spv)



10 km

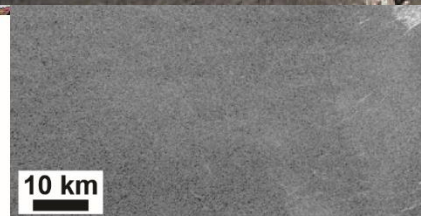
Possible spv analog



Sr  
vo



10 km



10 km





# Lander safety: Volcanic units, safe

Regional plains,  
lower unit (rp1)

Smooth plains,  
impact (spi)

Possible spi analog

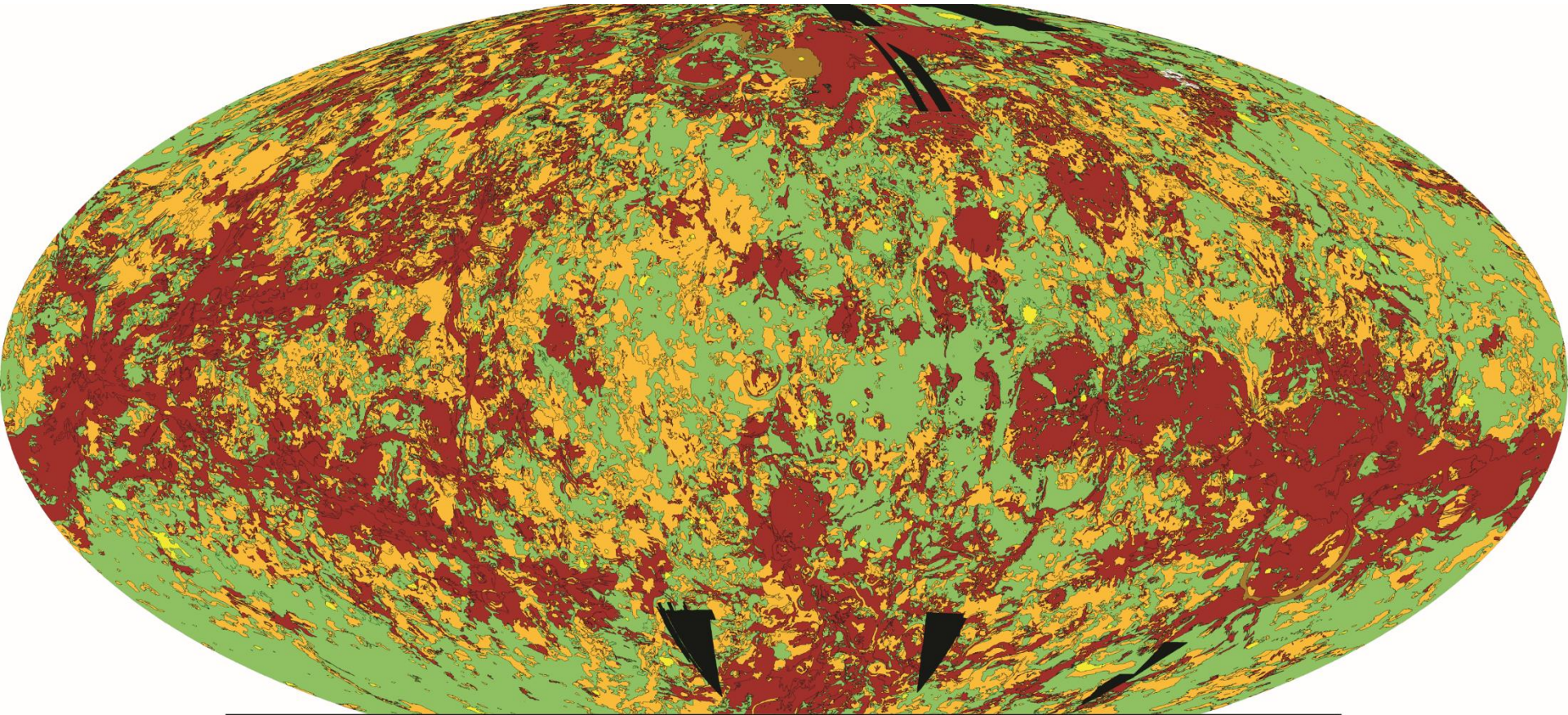
10 km




10 km

Sr  
vo



# Prioritization by safety



Unsafe units		Moderately safe units		Safe units
				
tectonic	volcanic	tectonic	volcanic	
<div>t</div> Tessera	<div>pl</div> Lobate plains	<div>pr</div> Ridged plains	<div>psh</div> Shield plains	<div>rp1</div> Regional plains, lower unit
<div>pdl</div> Densely lineated plains			<div>rp2</div> Regional plains, upper unit	<div>ps</div> Smooth plains
<div>gb</div> Groove belts				
<div>rz</div> Rift zones				



# **Scientific prioritization**

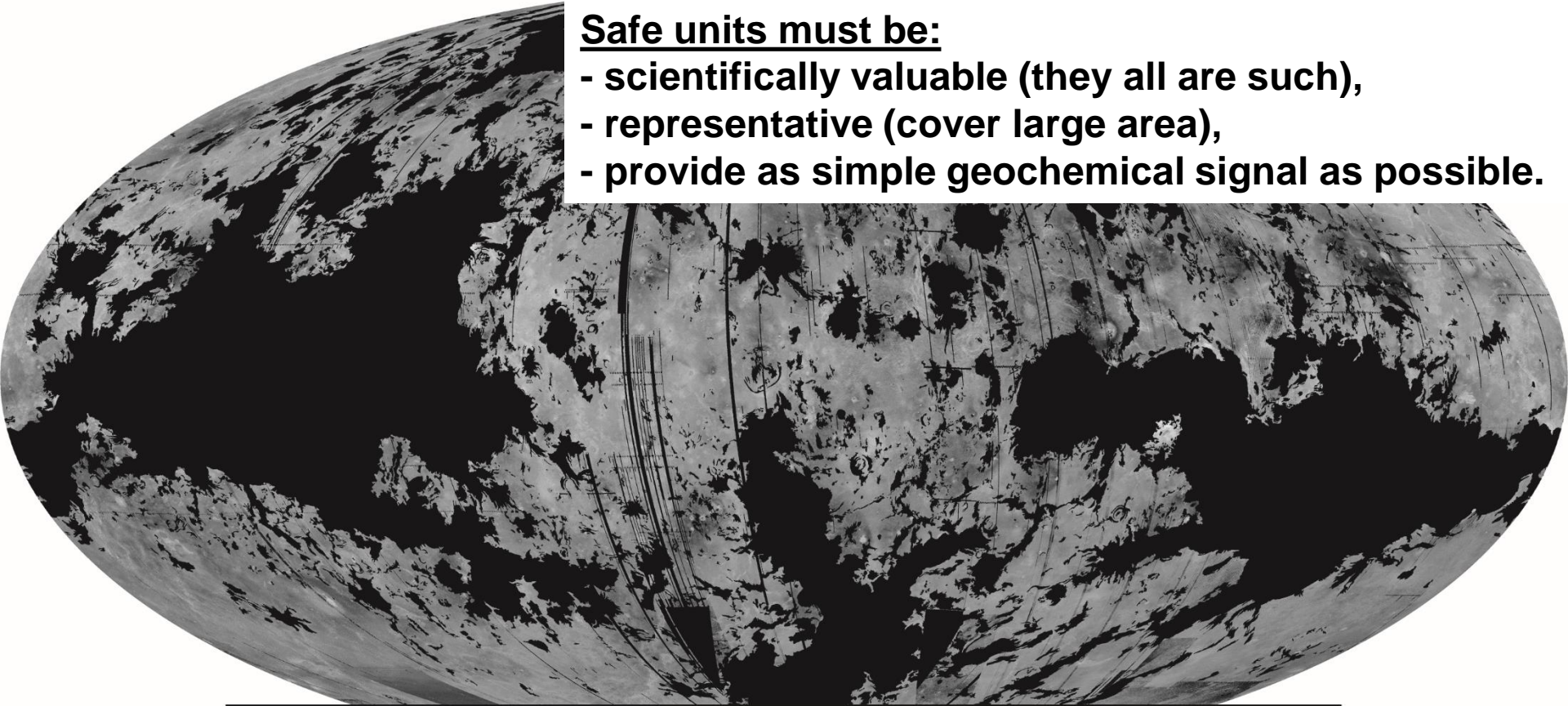
**No good data, no good mission**

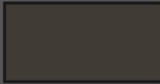



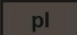
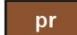




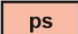
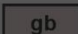



# Prioritization by science

## Safe units must be:

- scientifically valuable (they all are such),
- representative (cover large area),
- provide as simple geochemical signal as possible.

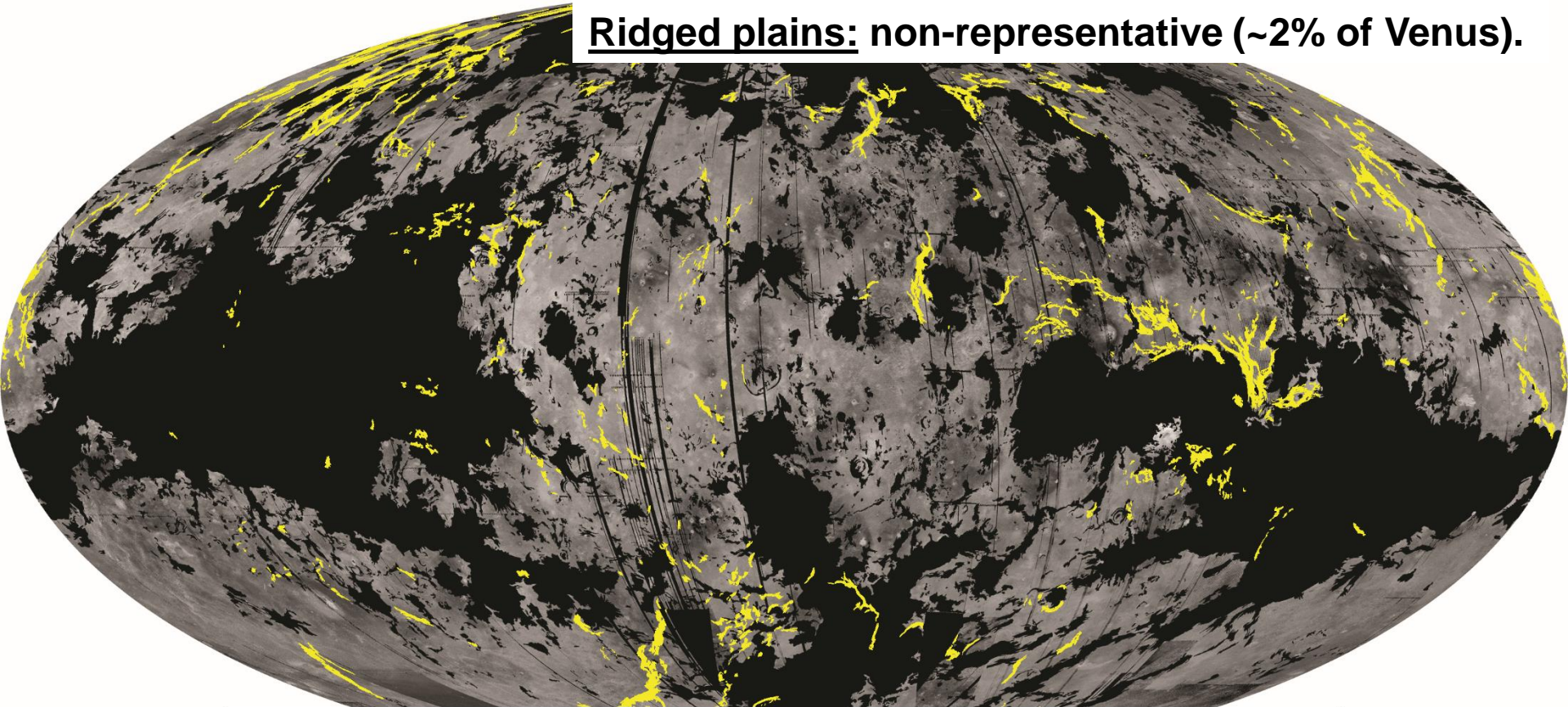


Unsafe units		Moderately safe units		Safe units
				
tectonic	volcanic	tectonic	volcanic	
 Tessera	 Lobate plains	 Ridged plains	 Shield plains	 Regional plains, lower unit
 Densely lineated plains			 Regional plains, upper unit	 Smooth plains
 Groove belts				
 Rift zones				



# Prioritization by science

Ridged plains: non-representative (~2% of Venus).



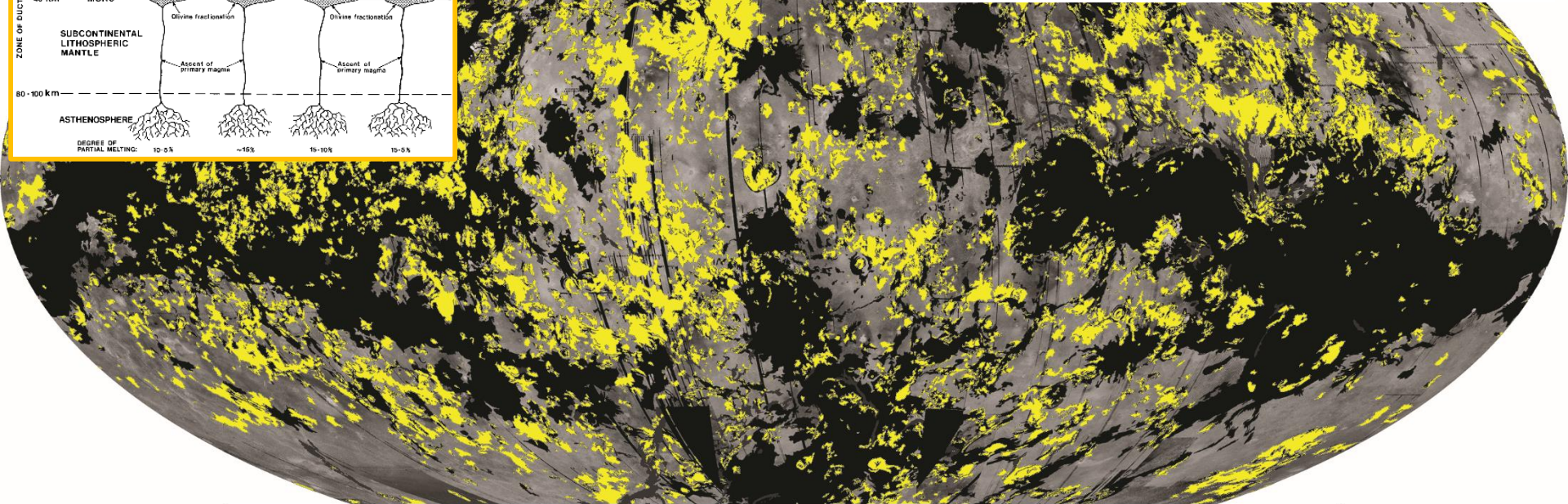
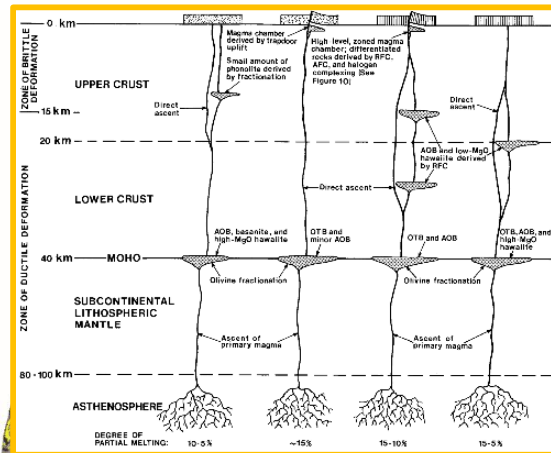
Unsafe units		Moderately safe units		Safe units
tectonic	volcanic	tectonic	volcanic	
t Tessera	pl Lobate plains	pr Ridged plains	psh Shield plains	rp1 Regional plains, lower unit
pdl Densely lineated plains			rp2 Regional plains, upper unit	ps Smooth plains
gb Groove belts				
rz Rift zones				



# Prioritization by science

## Shield plains:

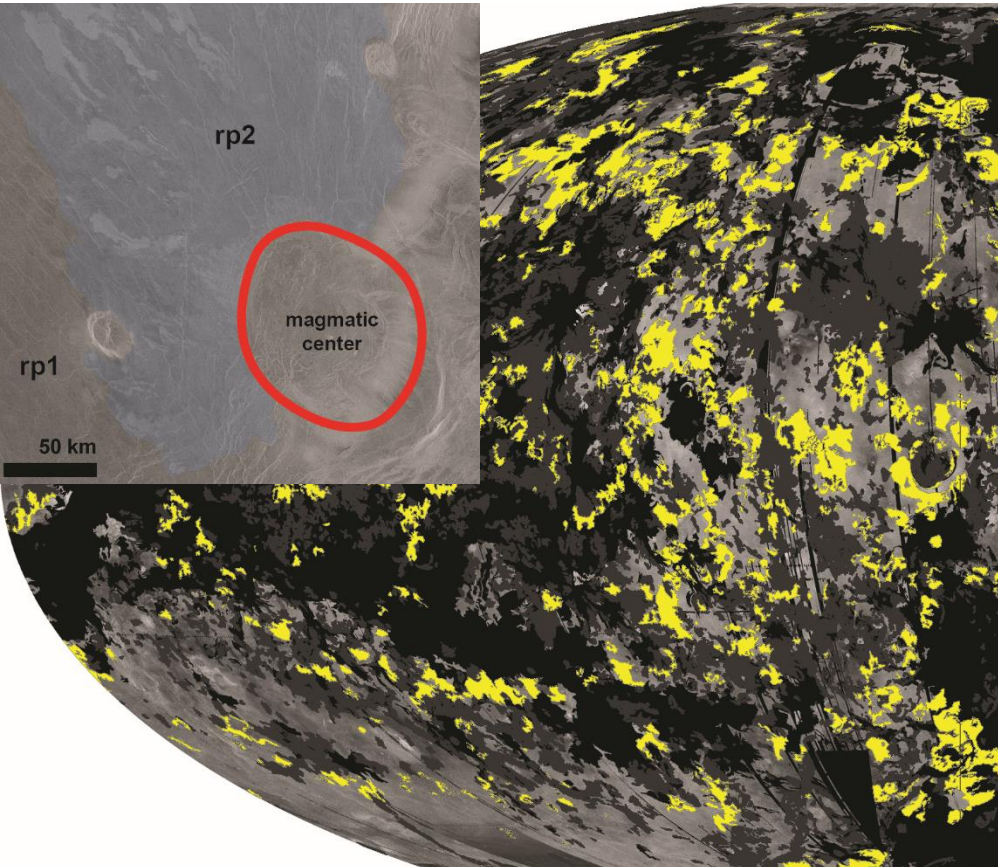
- representative (~19% of Venus),
- complex geochemical signal (poorly constrained interpretation).



Unsafe units		Moderately safe units		Safe units
tectonic	volcanic	tectonic	volcanic	
t Tessera	pl Lobate plains	pr Ridged plains	psh Shield plains	rp1 Regional plains, lower unit
pdl Densely lineated plains			rp2 Regional plains, upper unit	ps Smooth plains
gb Groove belts				
rz Rift zones				



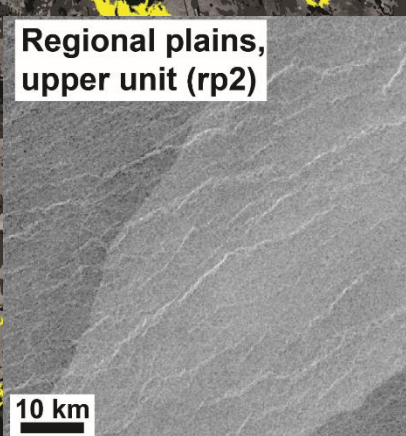
# Prioritization by science



## Regional plains 2:

- less representative (~9% of Venus),
- may represent initial stages of evolution of magmatic centers,
- may be unsafe for landing.

Regional plains, upper unit (rp2)



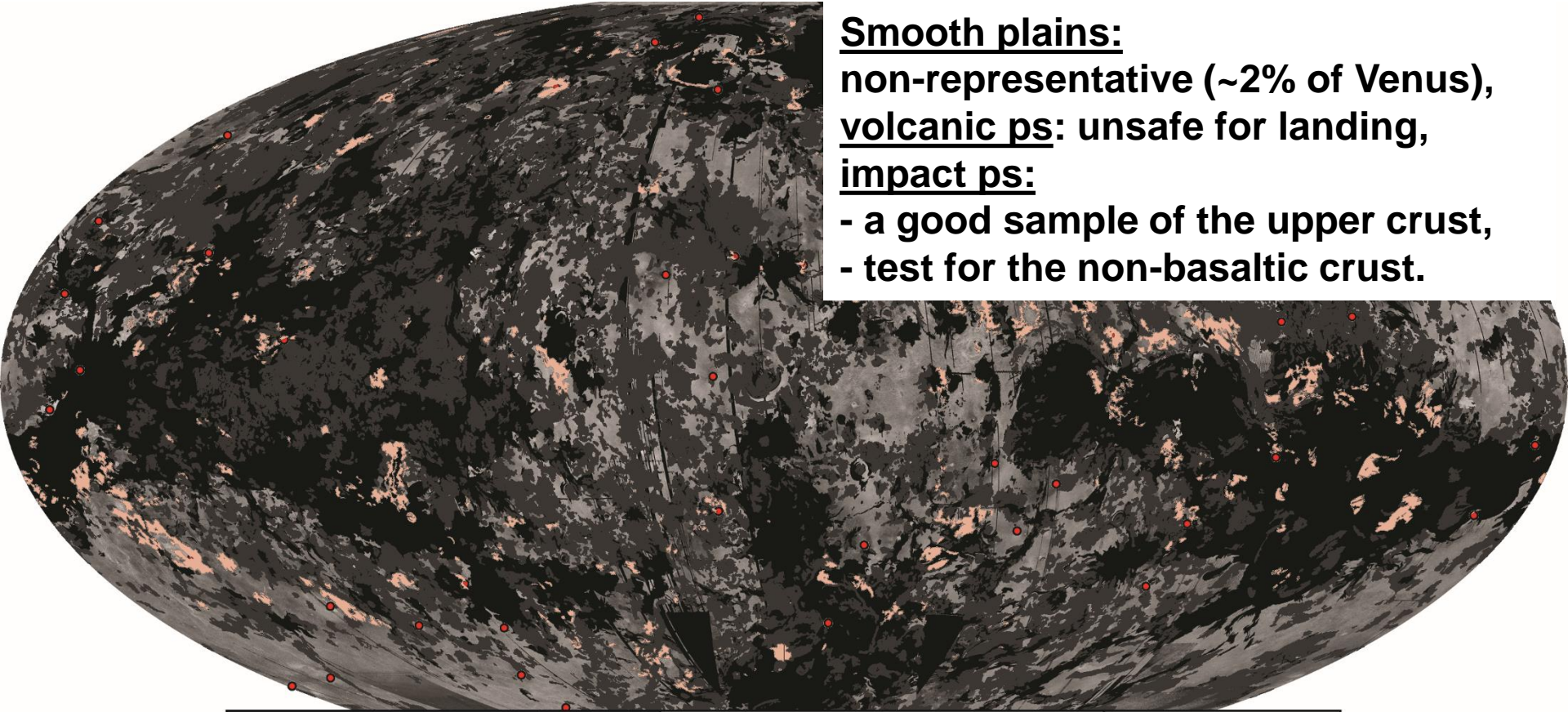
Possible rp2 analog



Unsafe units		Moderately safe units		Safe units
tectonic	volcanic	tectonic	volcanic	
t Tessera	pl Lobate plains	pr Ridged plains	psh Shield plains	rp1 Regional plains, lower unit
pdl Densely lineated plains			rp2 Regional plains, upper unit	ps Smooth plains
gb Groove belts				
rz Rift zones				



# Prioritization by science



## Smooth plains:

non-representative (~2% of Venus),

volcanic ps: unsafe for landing,

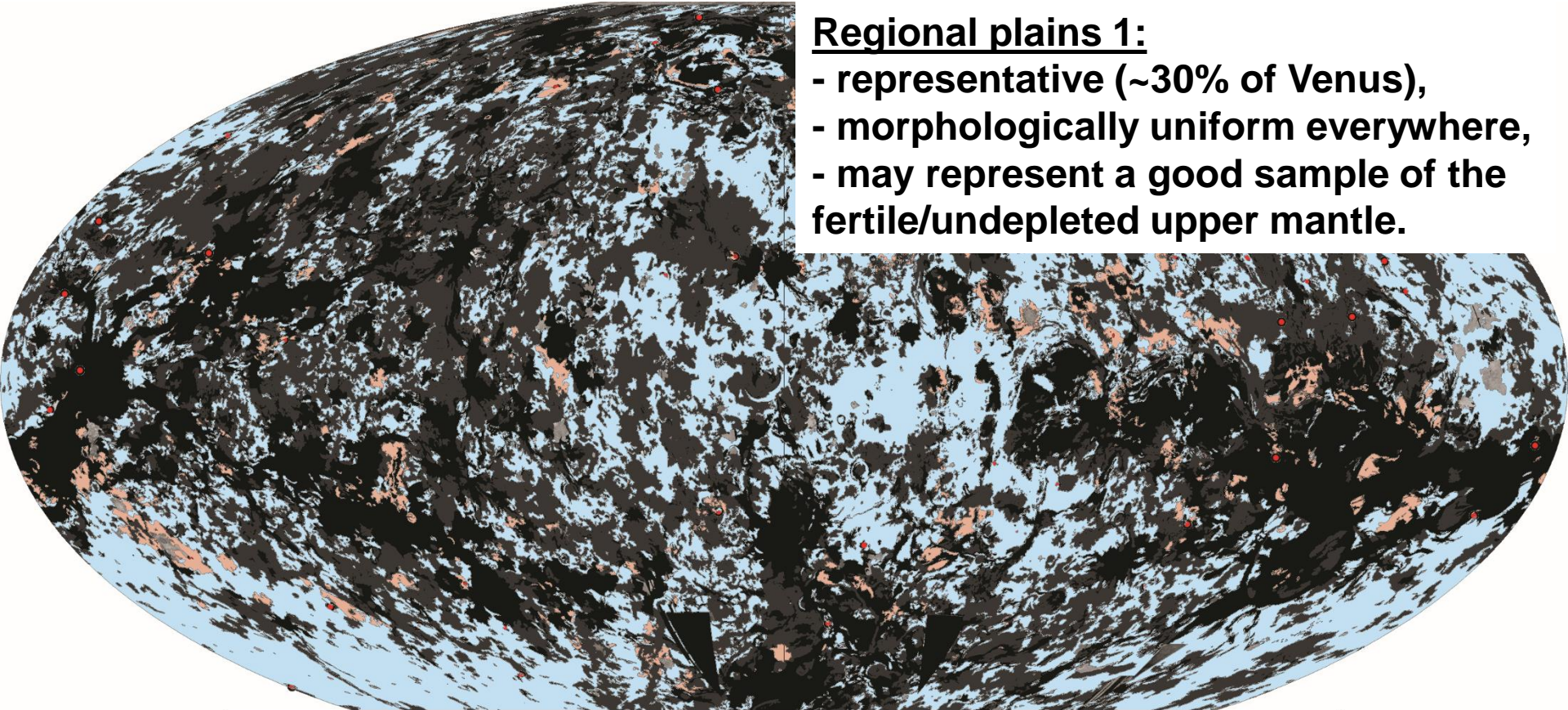
## impact ps:

- a good sample of the upper crust,
- test for the non-basaltic crust.

Unsafe units		Moderately safe units		Safe units
tectonic	volcanic	tectonic	volcanic	
t Tessera	pl Lobate plains	pr Ridged plains	psh Shield plains	rp1 Regional plains, lower unit
pdl Densely lineated plains			rp2 Regional plains, upper unit	ps Smooth plains
gb Groove belts				
rz Rift zones				

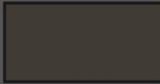


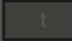
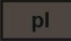
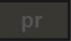
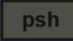

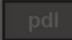
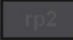
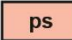
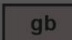
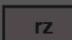


# Prioritization by science



## Regional plains 1:

- representative (~30% of Venus),
- morphologically uniform everywhere,
- may represent a good sample of the fertile/undepleted upper mantle.

Unsafe units		Moderately safe units		Safe units
				
tectonic	volcanic	tectonic	volcanic	
 Tessera	 Lobate plains	 Ridged plains	 Shield plains	 Regional plains, lower unit
 Densely lineated plains			 Regional plains, upper unit	 Smooth plains
 Groove belts				
 Rift zones				



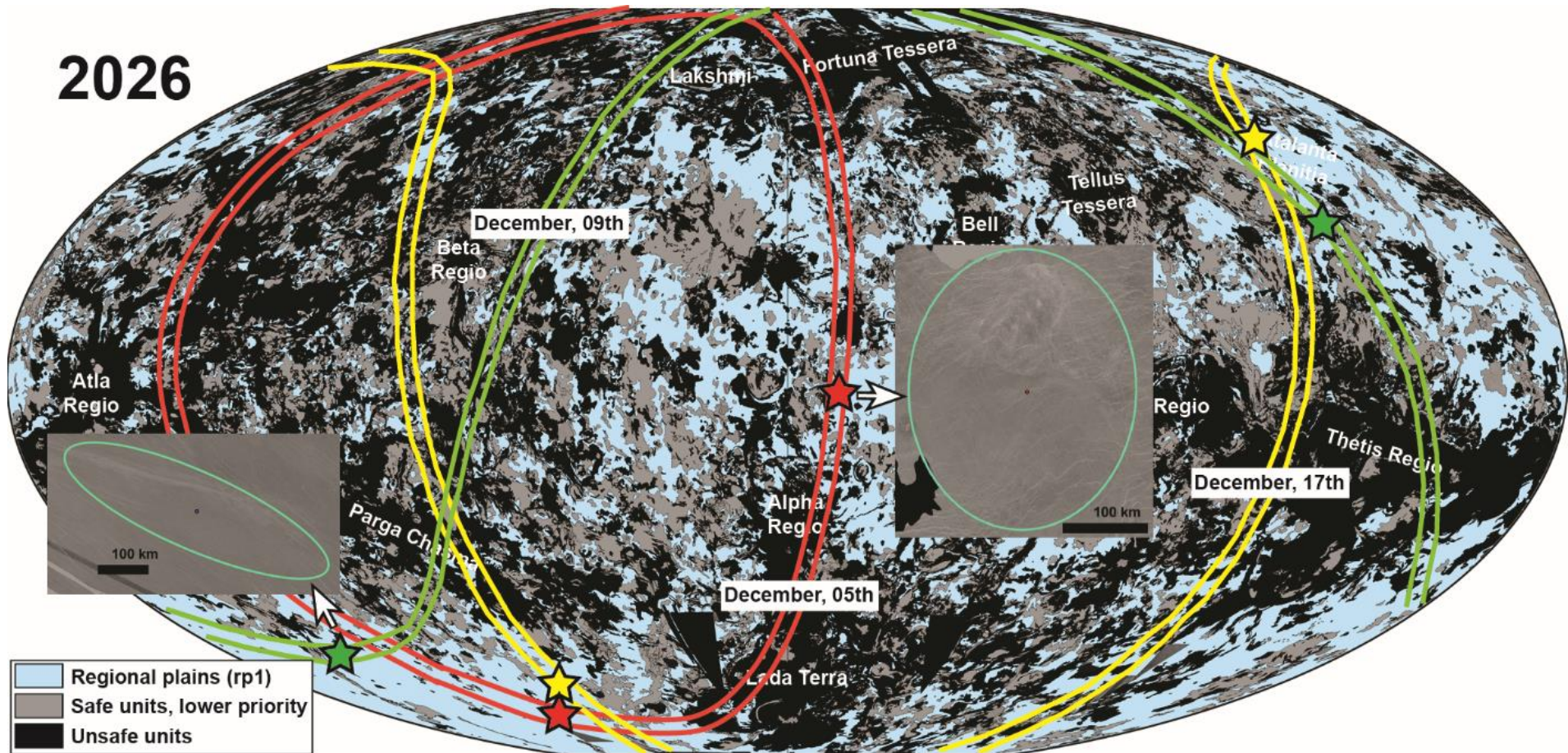
# **Orbital restrictions**

**We CANNOT land in ANY place we wish**



# Orbital restrictions

2026

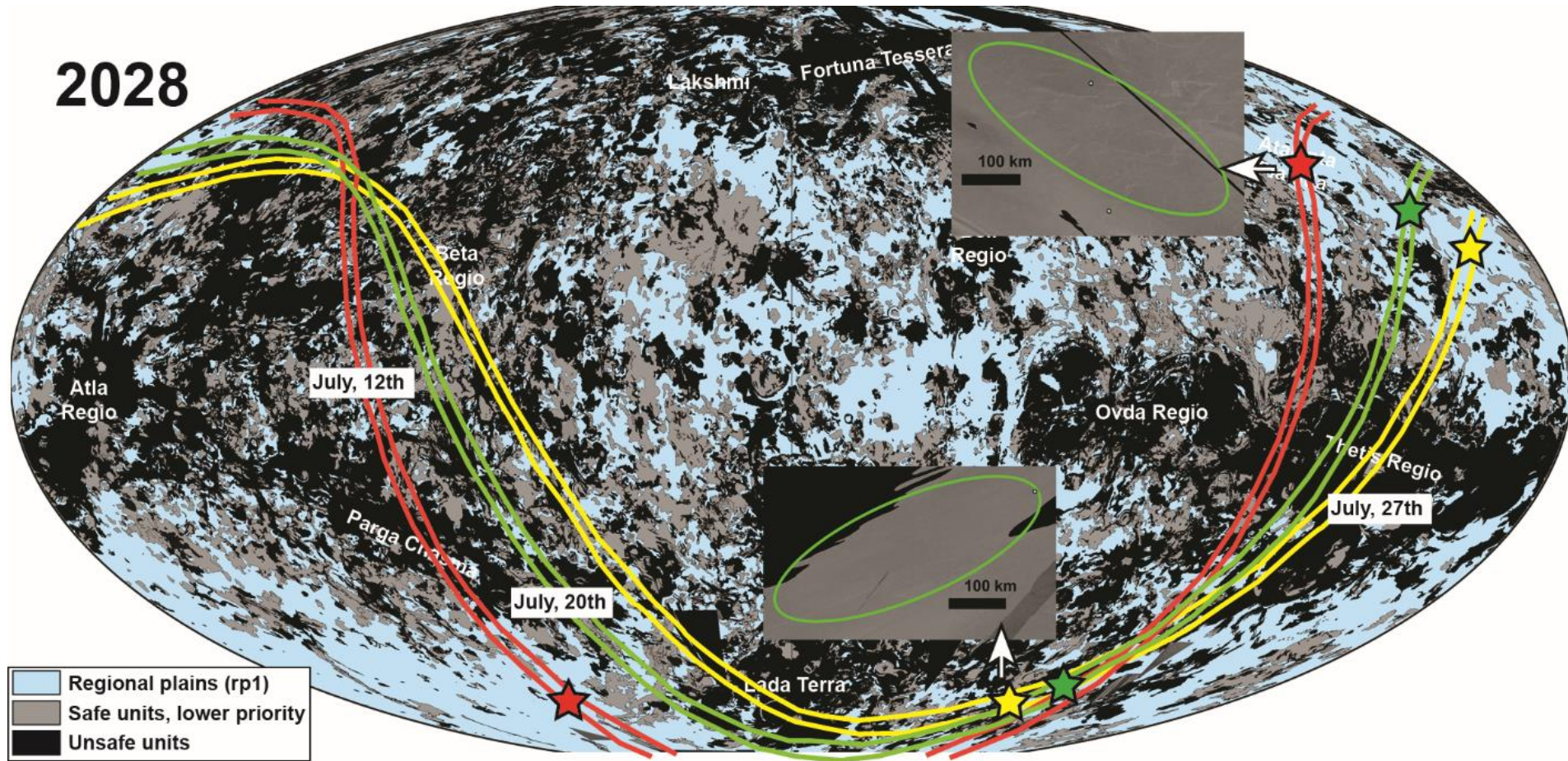


**Position of the attainability arcs for year of 2026. Insets show examples of the uncertainty ellipses for two selected landing sites. Stars indicate the other sites.**



# Orbital restrictions

2028

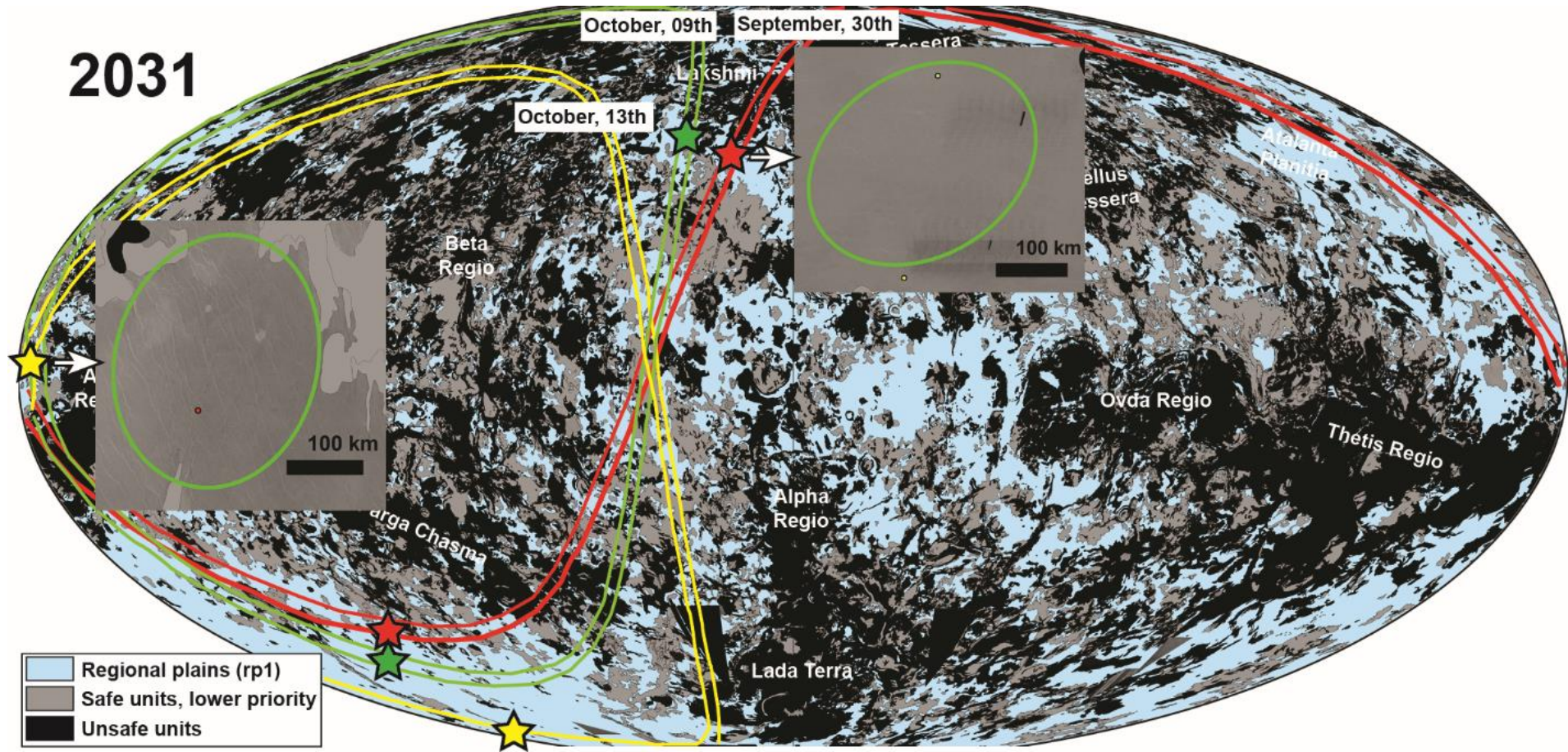


Position of the attainability arcs for year of 2028. Insets show examples of the uncertainty ellipses for two selected landing sites. Stars indicate the other sites.



# Orbital restrictions

2031



**Position of the attainability arcs for year of 2031. Insets show examples of the uncertainty ellipses for two selected landing sites. Stars indicate the other sites.**